



# DZIENNIK URZĘDOWY

## WOJEWÓDZTWA KUJAWSKO-POMORSKIEGO

---

Bydgoszcz, dnia 25 sierpnia 2015 r.

Poz. 2575

### UCHWAŁA NR X/254/15 SEJMIKU WOJEWÓDZTWA KUJAWSKO-POMORSKIEGO

z dnia 24 sierpnia 2015 r.

#### **w sprawie Obszaru Chronionego Krajobrazu Strefy Krawędziowej Kotliny Toruńskiej**

Na podstawie art. 23 ust. 2 ustawy z dnia 16 kwietnia 2004 r. o ochronie przyrody (Dz.U. z 2013 r., poz. 627, z późn. zm.<sup>1)</sup>), uchwala się, co następuje:

**§ 1. 1.** Wyznacza się Obszar Chronionego Krajobrazu Strefy Krawędziowej Kotliny Toruńskiej, zwany dalej „OChK Strefy Krawędziowej Kotliny Toruńskiej”.

2. Położenie i opis granic OChK Strefy Krawędziowej Kotliny Toruńskiej określa załącznik nr 1 do niniejszej uchwały.

**§ 2.** Mapa OChK Strefy Krawędziowej Kotliny Toruńskiej stanowi załącznik nr 2 do niniejszej uchwały.

**§ 3.** Wykaz współrzędnych punktów załamania granicy OChK Strefy Krawędziowej Kotliny Toruńskiej stanowi załącznik nr 3 do niniejszej uchwały.

**§ 4.** Ustalenia dotyczące czynnej ochrony ekosystemów na terenie OChK Strefy Krawędziowej Kotliny Toruńskiej obejmują: racjonalną gospodarkę leśną, polegającą na zachowaniu różnorodności biologicznej siedlisk Kotliny Toruńskiej i Pojezierza Chełmińskiego.

**§ 5.** Na obszarze OChK Strefy Krawędziowej Kotliny Toruńskiej, wprowadza się następujące zakazy:

- 1) zabijania dziko występujących zwierząt, niszczenia ich nor, legowisk, innych schronień i miejsc rozrodu oraz tarlisk, złożonej ikry, z wyjątkiem amatorskiego połowu ryb oraz wykonywania czynności związanych z racjonalną gospodarką rolną, leśną, rybacką i łowiecką;
- 2) realizacji przedsięwzięć mogących znacząco oddziaływać na środowisko w rozumieniu ustawy z dnia 3 października 2008 r. o udostępnianiu informacji o środowisku i jego ochronie, udziale społeczeństwa w ochronie środowiska oraz o ocenach oddziaływania na środowisko;
- 3) likwidowania i niszczenia zadrzewień śródpolnych, przydrożnych i nadwodnych, jeżeli nie wynikają one z potrzeby ochrony przeciwpowodziowej i zapewnienia bezpieczeństwa ruchu drogowego lub wodnego lub budowy, odbudowy, utrzymania, remontów lub naprawy urządzeń wodnych;
- 4) wykonywania prac ziemnych trwale zniekształcających rzeźbę terenu, z wyjątkiem prac związanych z zabezpieczeniem przeciwpowodziowym lub przeciwosuwiskowym lub utrzymaniem, budową, odbudową, naprawą lub remontem urządzeń wodnych;
- 5) dokonywania zmian stosunków wodnych, jeżeli służą innym celom niż ochrona przyrody lub zrównoważone wykorzystanie użytków rolnych i leśnych oraz racjonalnej gospodarcie wodnej lub rybackiej;

---

<sup>1)</sup>Zmiany tekstu jednolitego wymienionej ustawy zostały ogłoszone w Dz.U. z 2013 r., poz. 628 i 842, z 2014 r., poz. 805, 850, 926, 1002, 1101 i 1863 oraz z 2015 r., poz. 222, 774 i 1045.

- 6) likwidowania naturalnych zbiorników wodnych, starorzeczy i obszarów wodno-błotnych;
- 7) lokalizowania obiektów budowlanych w pasie szerokości 100 m od linii brzegów rzek, jezior i innych zbiorników wodnych, z wyjątkiem urządzeń wodnych oraz obiektów służących prowadzeniu racjonalnej gospodarki rolnej, leśnej lub rybackiej.

§ 6. Do postępowań, których przedmiotem jest uchwalenie lub zmiana miejscowego planu zagospodarowania przestrzennego lub studium uwarunkowań i kierunków zagospodarowania przestrzennego, w których przed dniem wejścia w życie niniejszej uchwały podjęto uchwałę o przystąpieniu do sporządzenia lub zmiany planu lub studium oraz zawiadomiono o terminie wyłożenia ich projektów do publicznego wglądu, ale postępowanie nie zostało zakończone przed wejściem w życie niniejszej uchwały, stosuje się przepisy uchwały Nr VI/106/11 Sejmiku Województwa Kujawsko-Pomorskiego z dnia 21 marca 2011 r. w sprawie obszarów chronionego krajobrazu (Dz. Urz. Woj. Kujawsko-Pomorskiego Nr 99, poz. 793), w brzmieniu obowiązującym przed wejściem w życie niniejszej uchwały.

§ 7. Nadzór nad OChK Strefy Krawędziowej Kotliny Toruńskiej sprawuje Marszałek Województwa Kujawsko-Pomorskiego.

§ 8. Wykonanie uchwały powierza się Zarządowi Województwa Kujawsko-Pomorskiego.

§ 9. Traci moc uchwała Nr VI/106/11 Sejmiku Województwa Kujawsko-Pomorskiego z dnia 21 marca 2011 r. w sprawie obszarów chronionego krajobrazu (Dz. Urz. Woj. Kujawsko-Pomorskiego Nr 99, poz. 793), w części dotyczącej Obszaru Chronionego Krajobrazu Strefy Krawędziowej Kotliny Toruńskiej wraz z załącznikiem nr 19.

§ 10. Uchwała wchodzi w życie po upływie 14 dni od dnia ogłoszenia w Dzienniku Urzędowym Województwa Kujawsko-Pomorskiego.

Przewodniczący Sejmiku

**Ryszard Bober**

Załącznik Nr 1 do Uchwały Nr X/254/15  
Sejmiku Województwa Kujawsko-Pomorskiego  
z dnia 24 sierpnia 2015 r.

## 2. Cel ochrony:

Racjonalna gospodarka leśna, polegająca na zachowaniu różnorodności biologicznej siedlisk Kotliny Toruńskiej i Pojezierza Chełmińskiego.

## 3. Położenie i charakterystyka:

Ponad 61% powierzchni obszaru występuje na terenie gminy Zławieś Wielka, a pozostała jego część położona jest na terenach gmin: Łubianka i Łysomice oraz miasta Torunia. Obszar ten rozciąga się między linią kolejową Toruń-Olsztyn na wschodzie, aż po zachodni skraj powiatu toruńskiego bezpośrednio sąsiadujący z terenami gminy Dąbrowa Chełmińska (powiat bydgoski). Od południa ogranicza obszar droga krajowa Toruń- Bydgoszcz, natomiast północną granicę stanowi strefa krawędziowa Kotliny Toruńskiej. Charakteryzuje się ona głębokimi i długimi rozcięciami, tzw. dolinami bocznymi. Powierzchnia obszaru charakteryzuje się dużą rozciągłością ze względu na strefę krawędziową Kotliny Toruńskiej, jedynie w centralnej części obszar znacznie się rozszerza ze względu na włączenie w jego zasięg terenów leśnych i trwałych użytków zielonych między Toruniem a Zławsią Wielką.

Obszar charakteryzuje się dużym pokryciem lasami - około 56%.

## 4. Powierzchnia:

Powierzchnia ogólna OChK Strefy Krawędziowej Kotliny Toruńskiej wynosi 11 638,01 ha.

Tab. 1. Wykaz powierzchni administracyjnych gmin położonych w granicach OChK Strefy Krawędziowej Kotliny Toruńskiej.

Lp.	Gmina	Powierzchnia [ha]	Powiat
1.	Łubianka	1 066,84	toruński
2.	Łysomice	2 886,24	
4.	Zławieś Wielka	7 373,21	
5.	Toruń	311,72	miasto na prawach powiatu
<b>Razem</b>		<b>11 638,01</b>	

## 5. Opis tekstowy przebiegu granicy:

Granice obszaru oparto o wyraźne naturalne i antropogeniczne linie terenowe oraz granice administracyjne.

GRANICA PÓLNOCNA biegnie od granicy Nadwiślańskiego Parku Krajobrazowego, która jest jednocześnie granicą powiatu bydgoskiego, wzdłuż południowego brzegu drogi powiatowej nr 1544C Bolumin - Skłudzewo, następnie na północ wschodnią stronę drogi powiatowej nr 2002C Skłudzewo - Gierkowo, by na skrzyżowaniu z drogą polną przed Gierkowem skrócić na wschód i przeciąć kompleks leśny duktem w oddziale nr 12-24-2-10-132. Wzdłuż wschodniej ściany lasu i południową stronę drogi polnej dochodzi do wsi Rzęczkowo. Stąd wzdłuż zachodniej strony drogi wojewódzkiej 546 dochodzi do skrzyżowania z drogą prowadzącą do Skłudzewa, gdzie skręca w drogę lokalną na wschód i jej północnym skrajem biegnie do Łążyna, skąd 930 m biegnie wzdłuż zachodniego brzegu drogi biegnącej do Łążyna Dolnego, po czym skręca na wschód i polną drogą dochodzi do Zamku Bierzglowskiego. Stąd wzdłuż północnej strony drogi lokalnej osiąga Zamek Bierzglowski - Łubianka, a dalej dochodzi do śladu dawnej linii kolejowej Toruń - Unisław. Stąd biegnąc południową stroną tej linii kolejowej dochodzi północnej granicy lasu oddział 12-24-1-03-3, po czym skręca na południe i biegnie wzdłuż wschodniej, a potem północnej ściany kompleksu leśnego na południe od wsi Różankowo. Granicą kompleksu leśnego i terenów rolnych prowadzi w kierunku wschodnim aż do linii kolejowej Toruń - Olsztyn.

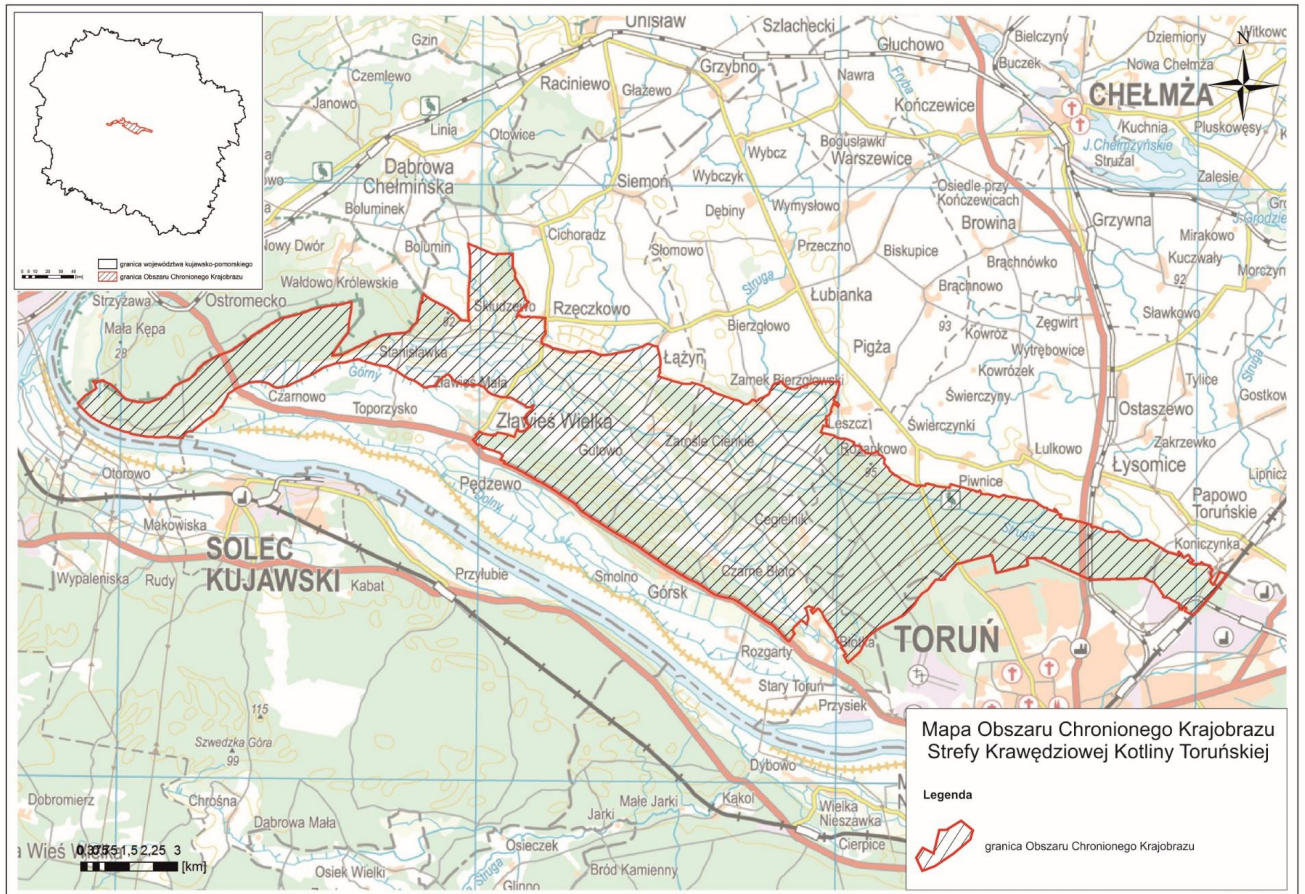
GRANICA WSCHODNIA biegnie wzdłuż zachodniej strony linii kolejowej Toruń - Olsztyn.

GRANICE POŁUDNIOWA stanowi skraj lasu, oddział leśny 12-24-1-02-207 na północ od Zakładu Unieszkodliwiania Odpadów Komunalnych miasta Torunia, następnie granice administracyjne Torunia, aż do dawnej linii kolejowej Toruń - Unisław. Obejmując teren Barbarki duktami leśnymi, zaczynając od oddziału leśnego nr 12-24-1-05-120, dochodzi do przecinki leśnej pod linie energetyczną w oddziale leśnym nr 12-24-1-05-130. Na północ od Przysieka wzdłuż ściany lasu, kanału melioracyjnego (wzdłuż działki ewidencyjnej 041509\_2.0009.38), polnej drogi (wzdłuż działki ewidencyjnej 041509\_2.0009.84) oraz drogi lokalnej w Rozgartach dochodzi do drogi krajowej nr 80 Toruń - Bydgoszcz. Wzdłuż północnej strony tej drogi zbliża się do Złejwsi Wielkiej, gdzie wzdłuż ściany lasu, oddział 12-24-1-01-227, polnej drogi i Kanału Górnego skręca na północ. Na gruntach Złejwsi Małej i Toporzyska zbliża się znacznie do północnej granicy, by wzdłuż północnych brzegu Kanału

Górnego i brzegu Wisły dojść do zachodniej granicy administracyjnej powiatu toruńskiego z powiatem bydgoskim.

GRANICE ZACHODNIA stanowi w całości granica administracyjna powiatu toruńskiego z powiatem bydgoskim.

Załącznik Nr 2 do Uchwały Nr X/254/15  
Sejmiku Województwa Kujawsko-Pomorskiego  
z dnia 24 sierpnia 2015 r.



Załącznik Nr 3 do Uchwały Nr X/254/15  
Sejmiku Województwa Kujawsko-Pomorskiego  
z dnia 24 sierpnia 2015 r.

<b>LP</b>	<b>X92</b>	<b>Y92</b>	<b>LATWGS84</b>	<b>LONWGS84</b>
1	580811	456099	53,052703	18,203936
2	580819	456104	53,052727	18,203960
3	580871	456029	53,052894	18,203554
4	580908	455986	53,053012	18,203323
5	580918	455951	53,053043	18,203135
6	580921	455933	53,053052	18,203037
7	580955	455860	53,053162	18,202644
8	580976	455800	53,053227	18,202321
9	580990	455732	53,053271	18,201951
10	576117	465641	53,025759	18,291420
11	576122	465618	53,025774	18,291299
12	576106	465568	53,025723	18,291028
13	576064	465504	53,025586	18,290688
14	576017	465540	53,025433	18,290884
15	575910	465568	53,025088	18,291037
16	575812	465591	53,024771	18,291162
17	575763	465600	53,024613	18,291217
18	575726	465603	53,024491	18,291235
19	575624	465574	53,024161	18,291079
20	575560	465566	53,023956	18,291038
21	575699	465388	53,024401	18,290080
22	575604	465293	53,024092	18,285574
23	575565	465256	53,023964	18,285377
24	575524	465218	53,023829	18,285173
25	575502	465189	53,023757	18,285016
26	575483	465169	53,023696	18,284912
27	575426	465122	53,023509	18,284659
28	575405	465121	53,023442	18,284658
29	575376	465121	53,023347	18,284658
30	575327	465136	53,023190	18,284742
31	575310	465146	53,023135	18,284793
32	575277	465189	53,023028	18,285027
33	575266	465175	53,022994	18,284950
34	575238	465149	53,022903	18,284815
35	575189	465113	53,022744	18,284619
36	575145	465079	53,022599	18,284442
37	575109	465056	53,022482	18,284319
38	575055	465024	53,022306	18,284147
39	575036	465008	53,022245	18,284065
40	575035	465004	53,022242	18,284040
41	575082	464933	53,022392	18,283657

42	575114	464896	53,022494	18,283460
43	575300	464724	53,023093	18,282525
44	575399	464634	53,023411	18,282039
45	575448	464589	53,023569	18,281795
46	575479	464562	53,023669	18,281653
47	575499	464542	53,023731	18,281544
48	575519	464518	53,023798	18,281415
49	575544	464487	53,023876	18,281244
50	575560	464460	53,023927	18,281100
51	575587	464412	53,024015	18,280841
52	575616	464362	53,024106	18,280571
53	575648	464305	53,024209	18,280262
54	575745	464135	53,024520	18,275349
55	575776	464092	53,024618	18,275112
56	575897	463928	53,025005	18,274227
57	576005	463780	53,025353	18,273428
58	576098	463653	53,025651	18,272744
59	576196	463515	53,025965	18,271998
60	576248	463440	53,030132	18,271591
61	576297	463368	53,030289	18,271205
62	576339	463285	53,030421	18,270759
63	576361	463213	53,030490	18,270368
64	576386	463095	53,030569	18,265732
65	576414	462975	53,030657	18,265090
66	576456	462800	53,030786	18,264148
67	576471	462746	53,030835	18,263854
68	576489	462699	53,030893	18,263602
69	576511	462656	53,030964	18,263371
70	576561	462579	53,031124	18,262952
71	576661	462437	53,031443	18,262188
72	576806	462228	53,031906	18,261057
73	576841	462170	53,032019	18,260747
74	576863	462130	53,032089	18,260529
75	576887	462075	53,032163	18,260231
76	576918	461999	53,032263	18,255821
77	576947	461929	53,032356	18,255445
78	576971	461884	53,032430	18,255205
79	577021	461796	53,032591	18,254727
80	577122	461623	53,032913	18,253797
81	577259	461384	53,033352	18,252507
82	577322	461281	53,033551	18,251946
83	577386	461169	53,033756	18,251343
84	577431	461101	53,033900	18,250979
85	577482	461026	53,034065	18,250570
86	577586	460878	53,034397	18,245769
87	577698	460719	53,034754	18,244912

88	577785	460596	53,035034	18,244249
89	577886	460450	53,035355	18,243460
90	578013	460264	53,035762	18,242453
91	578077	460154	53,035967	18,241858
92	578181	459985	53,040298	18,240947
93	578235	459895	53,040472	18,240458
94	578311	459776	53,040714	18,235818
95	578373	459671	53,040912	18,235249
96	578447	459545	53,041148	18,234569
97	578604	459294	53,041649	18,233214
98	578668	459191	53,041853	18,232660
99	578731	459110	53,042054	18,232219
100	578767	459057	53,042170	18,231932
101	578833	458932	53,042380	18,231256
102	578893	458839	53,042571	18,230757
103	578959	458739	53,042783	18,230216
104	579040	458615	53,043041	18,225544
105	579064	458577	53,043117	18,225337
106	579091	458543	53,043204	18,225155
107	579117	458515	53,043286	18,225001
108	579150	458485	53,043395	18,224842
109	579240	458416	53,043682	18,224466
110	579266	458393	53,043767	18,224338
111	579296	458361	53,043862	18,224169
112	579317	458338	53,043930	18,224045
113	579357	458283	53,044059	18,223746
114	579404	458207	53,044209	18,223336
115	579458	458124	53,044381	18,222888
116	579522	458025	53,044585	18,222349
117	579584	457930	53,044784	18,221835
118	579636	457848	53,044950	18,221394
119	579689	457765	53,045118	18,220947
120	579755	457662	53,045328	18,220391
121	579801	457590	53,045476	18,220000
122	579879	457475	53,045725	18,215379
123	579937	457369	53,045911	18,214807
124	579973	457297	53,050025	18,214416
125	580029	457180	53,050202	18,213786
126	580077	457098	53,050356	18,213342
127	580137	456997	53,050545	18,212793
128	580186	456913	53,050703	18,212339
129	580244	456813	53,050888	18,211799
130	580320	456690	53,051131	18,211136
131	580357	456617	53,051248	18,210739
132	580401	456532	53,051388	18,210280
133	580442	456442	53,051518	18,205797

134	580519	456279	53,051761	18,204914
135	580546	456201	53,051848	18,204498
136	580566	456142	53,051909	18,204179
137	580574	456131	53,051935	18,204117
138	577113	478625	53,033228	18,405145
139	577100	478624	53,033184	18,405142
140	577059	478596	53,033052	18,404994
141	576977	478536	53,032786	18,404669
142	576888	478462	53,032496	18,404278
143	576835	478420	53,032324	18,404054
144	576713	478321	53,031926	18,403526
145	576617	478245	53,031614	18,403119
146	576419	478087	53,030973	18,402272
147	576126	477830	53,030022	18,400898
148	576021	477737	53,025678	18,400402
149	575848	477571	53,025118	18,395514
150	575869	477549	53,025183	18,395398
151	582381	466467	53,062056	18,295625
152	582407	466436	53,062139	18,295454
153	582427	466401	53,062203	18,295267
154	582433	466382	53,062221	18,295167
155	586496	456489	53,083116	18,205751
156	586359	456480	53,082671	18,205709
157	586288	456518	53,082441	18,205920
158	586120	456616	53,081903	18,210457
159	585999	456699	53,081513	18,210907
160	585947	456728	53,081343	18,211067
161	585923	456736	53,081266	18,211113
162	585872	456737	53,081101	18,211119
163	585791	456773	53,080841	18,211316
164	585750	456790	53,080707	18,211409
165	585720	456798	53,080612	18,211454
166	585680	456791	53,080481	18,211416
167	585641	456848	53,080359	18,211728
168	585584	456913	53,080175	18,212082
169	585574	456898	53,080141	18,211998
170	585569	456874	53,080125	18,211872
171	585560	456861	53,080097	18,211799
172	585545	456844	53,080048	18,211710
173	585536	456839	53,080019	18,211684
174	585514	456836	53,075945	18,211671
175	585484	456831	53,075849	18,211646
176	585443	456822	53,075716	18,211595
177	585450	456770	53,075737	18,211315
178	585436	456737	53,075691	18,211142
179	585395	456688	53,075557	18,210880

180	585376	456674	53,075495	18,210804
181	585354	456684	53,075425	18,210860
182	585331	456677	53,075350	18,210825
183	585323	456666	53,075325	18,210762
184	585328	456628	53,075337	18,210557
185	585293	456605	53,075224	18,210437
186	585273	456586	53,075160	18,210337
187	585237	456572	53,075041	18,210264
188	585197	456546	53,074911	18,210125
189	585119	456519	53,074659	18,205985
190	585123	456535	53,074671	18,210066
191	585151	456548	53,074763	18,210136
192	585170	456584	53,074826	18,210330
193	585175	456625	53,074844	18,210552
194	585171	456647	53,074831	18,210669
195	585147	456643	53,074752	18,210650
196	585139	456693	53,074727	18,210916
197	585120	456692	53,074668	18,210913
198	585127	456718	53,074689	18,211054
199	585129	456737	53,074696	18,211154
200	585127	456753	53,074692	18,211240
201	585123	456784	53,074680	18,211408
202	585124	456810	53,074684	18,211548
203	585133	456845	53,074714	18,211733
204	585137	456867	53,074728	18,211857
205	585139	456889	53,074733	18,211971
206	585135	456916	53,074720	18,212120
207	585124	456956	53,074688	18,212331
208	585121	456987	53,074679	18,212503
209	585122	457017	53,074684	18,212665
210	585127	457075	53,074700	18,212974
211	585122	457138	53,074685	18,213313
212	585123	457163	53,074691	18,213448
213	585122	457186	53,074688	18,213570
214	585111	457294	53,074656	18,214156
215	585096	457428	53,074609	18,214877
216	585051	457423	53,074463	18,214852
217	585008	457418	53,074326	18,214828
218	584979	457418	53,074230	18,214828
219	584925	457424	53,074057	18,214859
220	584878	457422	53,073906	18,214854
221	584832	457414	53,073755	18,214813
222	584802	457412	53,073660	18,214803
223	584780	457413	53,073586	18,214811
224	584689	457433	53,073292	18,214920
225	584658	457438	53,073193	18,214949

226	584625	457434	53,073085	18,214930
227	584612	457430	53,073045	18,214908
228	584508	457361	53,072705	18,214545
229	584449	457325	53,072514	18,214352
230	584425	457315	53,072437	18,214301
231	584411	457313	53,072390	18,214287
232	584370	457310	53,072257	18,214274
233	584296	457306	53,072018	18,214256
234	584296	457321	53,072019	18,214338
235	584273	457395	53,071945	18,214738
236	584253	457463	53,071882	18,215105
237	584233	457524	53,071819	18,215434
238	584211	457562	53,071751	18,215639
239	584177	457620	53,071641	18,215951
240	584158	457661	53,071581	18,220173
241	584150	457686	53,071555	18,220307
242	584147	457709	53,071545	18,220430
243	584142	457745	53,071532	18,220627
244	584131	457793	53,071499	18,220887
245	584125	457822	53,071478	18,221041
246	584089	457936	53,071367	18,221656
247	584081	457976	53,071342	18,221872
248	584080	458001	53,071338	18,222005
249	584064	458074	53,071288	18,222401
250	584036	458197	53,071201	18,223064
251	584032	458236	53,071189	18,223276
252	584023	458296	53,071161	18,223595
253	584025	458335	53,071169	18,223807
254	584026	458370	53,071174	18,223995
255	584050	458430	53,071252	18,224316
256	584052	458464	53,071259	18,224499
257	584056	458579	53,071277	18,225118
258	584074	458747	53,071339	18,230023
259	584072	458779	53,071334	18,230191
260	584063	458818	53,071308	18,230406
261	584054	458859	53,071280	18,230625
262	584043	458896	53,071245	18,230824
263	584026	458939	53,071190	18,231057
264	584013	458968	53,071149	18,231214
265	583998	459009	53,071101	18,231437
266	583975	459065	53,071028	18,231735
267	583960	459104	53,070982	18,231949
268	583949	459139	53,070946	18,232138
269	583946	459156	53,070935	18,232229
270	583945	459173	53,070935	18,232320
271	583949	459236	53,070949	18,232657

272	583952	459311	53,070961	18,233059
273	583956	459367	53,070975	18,233363
274	583965	459424	53,071004	18,233668
275	583975	459483	53,071039	18,233985
276	583993	459577	53,071099	18,234490
277	584013	459678	53,071166	18,235033
278	584028	459764	53,071220	18,235496
279	584047	459865	53,071282	18,240040
280	584068	459980	53,071353	18,240657
281	584076	460024	53,071382	18,240890
282	584110	460127	53,071493	18,241446
283	584155	460278	53,071645	18,242254
284	584197	460406	53,071782	18,242944
285	584220	460469	53,071859	18,243280
286	584285	460579	53,072071	18,243867
287	584299	460610	53,072120	18,244035
288	584297	460631	53,072112	18,244151
289	584238	460771	53,071925	18,244904
290	584220	460832	53,071870	18,245232
291	584214	460893	53,071852	18,245559
292	584211	460912	53,071840	18,245663
293	584201	460911	53,071808	18,245660
294	584158	460915	53,071669	18,245681
295	584073	460937	53,071396	18,245802
296	584006	460954	53,071180	18,245899
297	583849	460984	53,070671	18,250069
298	583763	460998	53,070394	18,250149
299	583733	461002	53,070297	18,250171
300	583685	460999	53,070142	18,250156
301	583520	460986	53,065606	18,250092
302	583474	460982	53,065457	18,250075
303	583443	460989	53,065359	18,250112
304	583401	460989	53,065224	18,250116
305	583366	460979	53,065107	18,250061
306	583287	460942	53,064853	18,245868
307	583281	460939	53,064832	18,245851
308	583272	460962	53,064803	18,245975
309	583253	461030	53,064743	18,250340
310	583219	461137	53,064636	18,250917
311	583213	461159	53,064617	18,251039
312	583197	461208	53,064567	18,251301
313	583190	461236	53,064545	18,251450
314	583157	461335	53,064442	18,251986
315	583120	461440	53,064325	18,252550
316	583092	461530	53,064236	18,253035
317	583074	461612	53,064179	18,253480

318	583065	461646	53,064153	18,253664
319	583054	461689	53,064117	18,253893
320	583047	461751	53,064096	18,254228
321	583047	461877	53,064100	18,254904
322	583044	461942	53,064090	18,255254
323	583042	461958	53,064084	18,255343
324	583084	461975	53,064223	18,255431
325	583049	462123	53,064113	18,260228
326	582981	462322	53,063898	18,261304
327	582973	462355	53,063871	18,261481
328	582955	462362	53,063813	18,261520
329	582940	462364	53,063764	18,261529
330	582923	462399	53,063712	18,261717
331	582918	462426	53,063695	18,261867
332	582907	462457	53,063661	18,262031
333	582899	462478	53,063636	18,262146
334	582896	462499	53,063628	18,262256
335	582890	462516	53,063609	18,262353
336	582878	462537	53,063569	18,262466
337	582865	462558	53,063529	18,262578
338	582854	462566	53,063493	18,262620
339	582832	462577	53,063421	18,262682
340	582819	462589	53,063381	18,262748
341	582742	462767	53,063133	18,263709
342	582676	462951	53,062925	18,264697
343	582599	463177	53,062681	18,265916
344	582582	463227	53,062629	18,270187
345	582565	463269	53,062576	18,270412
346	582553	463303	53,062535	18,270597
347	582551	463321	53,062531	18,270693
348	582540	463374	53,062495	18,270979
349	582526	463433	53,062452	18,271296
350	582517	463453	53,062424	18,271408
351	582505	463472	53,062384	18,271511
352	582494	463486	53,062350	18,271583
353	582483	463502	53,062314	18,271671
354	582470	463522	53,062273	18,271780
355	582447	463560	53,062199	18,271984
356	582433	463586	53,062156	18,272123
357	582425	463611	53,062129	18,272262
358	582420	463635	53,062114	18,272392
359	582417	463661	53,062105	18,272532
360	582419	463695	53,062114	18,272712
361	582427	463724	53,062139	18,272865
362	582439	463754	53,062179	18,273027
363	582483	463802	53,062321	18,273286

364	582544	463865	53,062521	18,273620
365	582543	463894	53,062520	18,273777
366	582522	463951	53,062452	18,274085
367	582507	463974	53,062405	18,274207
368	582509	463991	53,062412	18,274301
369	582526	464016	53,062466	18,274435
370	582568	464072	53,062604	18,274733
371	582586	464099	53,062663	18,274877
372	582610	464150	53,062743	18,275151
373	582631	464195	53,062811	18,275395
374	582648	464233	53,062865	18,275597
375	582687	464316	53,062995	18,280039
376	582693	464329	53,063014	18,280113
377	582712	464357	53,063078	18,280263
378	582725	464371	53,063118	18,280338
379	582740	464386	53,063167	18,280414
380	582759	464392	53,063229	18,280447
381	582795	464404	53,063346	18,280513
382	582861	464431	53,063559	18,280652
383	582933	464467	53,063793	18,280842
384	583010	464508	53,064044	18,281059
385	583027	464526	53,064100	18,281159
386	583038	464545	53,064137	18,281259
387	583051	464571	53,064180	18,281398
388	583062	464597	53,064215	18,281539
389	583073	464630	53,064250	18,281715
390	583109	464736	53,064369	18,282281
391	583124	464780	53,064419	18,282520
392	583092	464794	53,064319	18,282599
393	583075	464805	53,064261	18,282656
394	583061	464815	53,064217	18,282712
395	583050	464825	53,064183	18,282764
396	583040	464830	53,064151	18,282792
397	583034	464835	53,064129	18,282817
398	583023	464844	53,064094	18,282867
399	582994	464872	53,064001	18,283020
400	582978	464890	53,063949	18,283118
401	582957	464918	53,063882	18,283271
402	582939	464948	53,063824	18,283431
403	582930	464961	53,063798	18,283504
404	582924	464975	53,063777	18,283577
405	582916	464994	53,063752	18,283677
406	582901	465039	53,063703	18,283922
407	582892	465071	53,063677	18,284092
408	582888	465097	53,063665	18,284234
409	582886	465122	53,063657	18,284371

410	582885	465170	53,063657	18,284626
411	582888	465201	53,063666	18,284794
412	582893	465228	53,063683	18,284939
413	582921	465313	53,063776	18,285395
414	582962	465424	53,063912	18,285990
415	583013	465558	53,064081	18,290707
416	583042	465638	53,064176	18,291141
417	583072	465722	53,064274	18,291588
418	583084	465758	53,064313	18,291782
419	583095	465803	53,064351	18,292027
420	583103	465849	53,064378	18,292273
421	583111	465906	53,064405	18,292578
422	583115	465955	53,064420	18,292843
423	583117	466015	53,064426	18,293165
424	583115	466088	53,064423	18,293556
425	583112	466175	53,064413	18,294026
426	583109	466291	53,064407	18,294648
427	583108	466406	53,064405	18,295268
428	583104	466525	53,064398	18,295909
429	583102	466564	53,064392	18,300117
430	583069	466570	53,064283	18,300151
431	583049	466565	53,064220	18,300128
432	583019	466561	53,064122	18,300106
433	582992	466555	53,064035	18,300075
434	582973	466553	53,063971	18,300064
435	582935	466548	53,063849	18,300036
436	574370	466831	53,020131	18,301877
437	574598	466701	53,020866	18,301175
438	574639	466772	53,021001	18,301553
439	574705	466736	53,021213	18,301358
440	574835	466629	53,021631	18,300779
441	581695	456941	53,055587	18,212418
442	581725	456930	53,055685	18,212360
443	581775	456888	53,055846	18,212129
444	581890	456816	53,060216	18,211738
445	581988	456756	53,060531	18,211409
446	581994	456761	53,060551	18,211437
447	581998	456766	53,060562	18,211464
448	582011	456784	53,060606	18,211557
449	582024	456791	53,060649	18,211597
450	582036	456801	53,060687	18,211652
451	582054	456817	53,060748	18,211737
452	582078	456837	53,060824	18,211841
453	582100	456856	53,060898	18,211940
454	582114	456865	53,060943	18,211992
455	582133	456888	53,061004	18,212112

456	582152	456907	53,061065	18,212212
457	582171	456925	53,061128	18,212307
458	582188	456941	53,061183	18,212396
459	582205	456961	53,061238	18,212502
460	582227	456989	53,061312	18,212650
461	582239	457002	53,061349	18,212718
462	582260	457014	53,061419	18,212782
463	582282	457022	53,061489	18,212824
464	582324	457037	53,061625	18,212903
465	582342	457044	53,061686	18,212943
466	582363	457051	53,061754	18,212976
467	582373	457052	53,061785	18,212983
468	582383	457053	53,061819	18,212985
469	582373	457036	53,061784	18,212894
470	582355	457011	53,061726	18,212762
471	582335	456971	53,061660	18,212549
472	582324	456955	53,061623	18,212466
473	582321	456947	53,061615	18,212420
474	582325	456929	53,061627	18,212323
475	582328	456913	53,061637	18,212239
476	582325	456901	53,061625	18,212172
477	582322	456872	53,061615	18,212016
478	582316	456857	53,061594	18,211936
479	582316	456845	53,061594	18,211871
480	582320	456837	53,061608	18,211829
481	582335	456828	53,061657	18,211779
482	582352	456810	53,061709	18,211683
483	582391	456760	53,061835	18,211410
484	582420	456717	53,061928	18,211180
485	582439	456682	53,061989	18,210991
486	582457	456646	53,062047	18,210797
487	582500	456568	53,062184	18,210374
488	582577	456430	53,062426	18,205628
489	582597	456397	53,062490	18,205447
490	582607	456371	53,062524	18,205307
491	582615	456330	53,062547	18,205089
492	582617	456292	53,062554	18,204881
493	582623	456253	53,062573	18,204674
494	582623	456226	53,062571	18,204530
495	582630	456182	53,062592	18,204290
496	582633	456120	53,062600	18,203959
497	582638	456051	53,062614	18,203587
498	582642	456020	53,062627	18,203418
499	582650	456002	53,062653	18,203324
500	582661	455970	53,062685	18,203149
501	582672	455929	53,062722	18,202927

502	582684	455886	53,062759	18,202697
503	582702	455813	53,062813	18,202300
504	582709	455782	53,062836	18,202137
505	582734	455744	53,062917	18,201929
506	582758	455703	53,062991	18,201708
507	582772	455679	53,063035	18,201579
508	582794	455647	53,063106	18,201404
509	582843	455601	53,063264	18,201157
510	582933	455519	53,063554	18,200708
511	582951	455496	53,063610	18,200585
512	582972	455453	53,063678	18,200355
513	582998	455394	53,063758	18,200032
514	583007	455367	53,063787	18,195889
515	583010	455334	53,063798	18,195710
516	583014	455285	53,063808	18,195445
517	583014	455197	53,063807	18,194973
518	583017	455075	53,063810	18,194317
519	583021	455010	53,063821	18,193966
520	583023	454909	53,063827	18,193424
521	583025	454855	53,063832	18,193134
522	583029	454841	53,063844	18,193058
523	583037	454811	53,063867	18,192897
524	583041	454795	53,063882	18,192810
525	583057	454762	53,063930	18,192633
526	583065	454748	53,063957	18,192558
527	583083	454716	53,064015	18,192385
528	583096	454693	53,064057	18,192255
529	583110	454667	53,064101	18,192117
530	583119	454641	53,064127	18,191977
531	583129	454611	53,064159	18,191818
532	583141	454584	53,064198	18,191670
533	583150	454568	53,064228	18,191582
534	583167	454552	53,064281	18,191495
535	583191	454534	53,064359	18,191396
536	583202	454523	53,064395	18,191341
537	583226	454505	53,064471	18,191240
538	583252	454483	53,064555	18,191123
539	583279	454464	53,064640	18,191014
540	583298	454447	53,064703	18,190927
541	583321	454424	53,064776	18,190802
542	583330	454413	53,064803	18,190743
543	583335	454405	53,064819	18,190698
544	583342	454380	53,064843	18,190560
545	583344	454365	53,064849	18,190478
546	583343	454351	53,064843	18,190407
547	583333	454341	53,064811	18,190355

548	583315	454323	53,064752	18,190255
549	583303	454310	53,064715	18,190188
550	583290	454298	53,064672	18,190126
551	583268	454267	53,064601	18,185959
552	583254	454245	53,064552	18,185838
553	583245	454234	53,064525	18,185781
554	583217	454205	53,064431	18,185626
555	583183	454167	53,064322	18,185426
556	583166	454147	53,064267	18,185319
557	583153	454134	53,064222	18,185246
558	583133	454119	53,064156	18,185166
559	583085	454083	53,064000	18,184976
560	583045	454055	53,063870	18,184831
561	583020	454037	53,063788	18,184731
562	582995	454016	53,063709	18,184621
563	582971	453989	53,063628	18,184479
564	582969	453961	53,063622	18,184327
565	582970	453902	53,063624	18,184009
566	582968	453846	53,063614	18,183709
567	582964	453812	53,063600	18,183526
568	582953	453783	53,063563	18,183372
569	582935	453746	53,063506	18,183172
570	582928	453720	53,063480	18,183033
571	582926	453703	53,063475	18,182944
572	582931	453675	53,063491	18,182790
573	582941	453645	53,063521	18,182627
574	582951	453620	53,063552	18,182494
575	582963	453601	53,063590	18,182390
576	583006	453555	53,063728	18,182142
577	583044	453505	53,063849	18,181870
578	583077	453454	53,063954	18,181592
579	583084	453437	53,063977	18,181502
580	583104	453406	53,064043	18,181332
581	583149	453335	53,064184	18,180948
582	583160	453311	53,064219	18,180818
583	583171	453275	53,064255	18,180627
584	583174	453257	53,064264	18,180531
585	583178	453234	53,064277	18,180407
586	583183	453203	53,064290	18,180237
587	583190	453184	53,064312	18,180138
588	583219	453142	53,064404	18,175908
589	583265	453055	53,064551	18,175438
590	583284	453020	53,064612	18,175247
591	583320	452977	53,064727	18,175016
592	583349	452931	53,064819	18,174765
593	583386	452884	53,064936	18,174514

594	583435	452833	53,065095	18,174232
595	583466	452787	53,065195	18,173984
596	583467	452755	53,065196	18,173815
597	583479	452710	53,065233	18,173571
598	583495	452671	53,065283	18,173360
599	583534	452607	53,065407	18,173012
600	583566	452553	53,065510	18,172719
601	583579	452518	53,065550	18,172531
602	583588	452481	53,065577	18,172331
603	583595	452431	53,065601	18,172065
604	583596	452398	53,065603	18,171887
605	583604	452342	53,065625	18,171583
606	583613	452319	53,065653	18,171461
607	583612	452299	53,065651	18,171353
608	583620	452255	53,065676	18,171113
609	583631	452193	53,065709	18,170780
610	583656	452102	53,065788	18,170289
611	583684	452002	53,065876	18,165751
612	583745	451793	53,070064	18,164623
613	583770	451698	53,070143	18,164108
614	583784	451682	53,070187	18,164026
615	583805	451654	53,070254	18,163874
616	583811	451613	53,070273	18,163652
617	583813	451577	53,070278	18,163458
618	583799	451540	53,070231	18,163259
619	583785	451471	53,070182	18,162891
620	583753	451331	53,070076	18,162139
621	583739	451299	53,070028	18,161963
622	583736	451263	53,070018	18,161772
623	583727	451248	53,065989	18,161693
624	583719	451212	53,065962	18,161497
625	583716	451173	53,065951	18,161287
626	583707	451131	53,065921	18,161066
627	583709	451084	53,065924	18,160812
628	583701	451043	53,065898	18,160593
629	583697	451002	53,065882	18,160369
630	583694	450963	53,065874	18,160158
631	583687	450923	53,065847	18,155946
632	583676	450889	53,065810	18,155762
633	583642	450789	53,065700	18,155229
634	583626	450725	53,065643	18,154884
635	583608	450679	53,065584	18,154639
636	583599	450643	53,065554	18,154442
637	583587	450598	53,065513	18,154203
638	583578	450584	53,065485	18,154129
639	583569	450558	53,065454	18,153988

640	583541	450515	53,065361	18,153757
641	583524	450475	53,065306	18,153542
642	583507	450452	53,065250	18,153420
643	583489	450418	53,065191	18,153240
644	583467	450390	53,065119	18,153090
645	583444	450347	53,065042	18,152859
646	583432	450312	53,065003	18,152674
647	583423	450303	53,064972	18,152623
648	583405	450289	53,064915	18,152552
649	583386	450247	53,064851	18,152326
650	583362	450197	53,064772	18,152060
651	583350	450184	53,064734	18,151989
652	583339	450166	53,064697	18,151891
653	583334	450151	53,064679	18,151810
654	583319	450130	53,064629	18,151698
655	583307	450104	53,064590	18,151561
656	583276	450050	53,064490	18,151272
657	583235	449963	53,064354	18,150807
658	583193	449861	53,064213	18,150260
659	583172	449820	53,064146	18,150042
660	583107	449670	53,063930	18,145240
661	583096	449643	53,063893	18,145094
662	583063	449578	53,063785	18,144742
663	583042	449527	53,063715	18,144469
664	583026	449506	53,063660	18,144357
665	583017	449482	53,063630	18,144233
666	582995	449434	53,063557	18,143975
667	582978	449410	53,063502	18,143847
668	582976	449383	53,063495	18,143699
669	582963	449322	53,063450	18,143374
670	582949	449254	53,063404	18,143011
671	582937	449178	53,063362	18,142598
672	582925	449119	53,063322	18,142285
673	582927	449066	53,063327	18,141999
674	582933	449028	53,063345	18,141793
675	582949	448989	53,063394	18,141583
676	582996	448910	53,063543	18,141158
677	583055	448822	53,063731	18,140679
678	583066	448801	53,063765	18,140566
679	583075	448762	53,063794	18,140356
680	583086	448729	53,063829	18,140176
681	583088	448705	53,063833	18,140048
682	583097	448674	53,063864	18,135881
683	583101	448619	53,063873	18,135582
684	583109	448584	53,063900	18,135397
685	583112	448558	53,063908	18,135256

686	583107	448514	53,063888	18,135020
687	583104	448423	53,063877	18,134529
688	583098	448341	53,063855	18,134087
689	583092	448233	53,063832	18,133508
690	583089	448205	53,063821	18,133357
691	583079	448184	53,063786	18,133244
692	583043	448128	53,063668	18,132944
693	583007	448059	53,063550	18,132577
694	582965	447967	53,063410	18,132087
695	582920	447852	53,063259	18,131468
696	582900	447800	53,063193	18,131188
697	582882	447777	53,063137	18,131068
698	582856	447739	53,063048	18,130864
699	582812	447674	53,062906	18,130518
700	582796	447650	53,062851	18,130388
701	582770	447611	53,062766	18,130184
702	582753	447581	53,062711	18,130019
703	582739	447561	53,062664	18,125912
704	582729	447554	53,062631	18,125877
705	582719	447554	53,062599	18,125876
706	582712	447554	53,062576	18,125880
707	582674	447537	53,062452	18,125789
708	582592	447494	53,062186	18,125560
709	582520	447454	53,061951	18,125352
710	582450	447415	53,061725	18,125145
711	582407	447392	53,061584	18,125024
712	582359	447362	53,061428	18,124868
713	582342	447346	53,061372	18,124782
714	582330	447328	53,061331	18,124684
715	582294	447296	53,061216	18,124515
716	582267	447270	53,061125	18,124377
717	582210	447229	53,060940	18,124162
718	582160	447187	53,060776	18,123935
719	582113	447147	53,060623	18,123726
720	582073	447112	53,060493	18,123536
721	582046	447077	53,060405	18,123352
722	582005	447009	53,060270	18,122990
723	581961	446937	53,060125	18,122605
724	581915	446870	53,055974	18,122246
725	581855	446786	53,055776	18,121801
726	581780	446688	53,055529	18,121276
727	581684	446573	53,055216	18,120663
728	581611	446485	53,054975	18,120197
729	581577	446439	53,054863	18,115949
730	581573	446375	53,054847	18,115604
731	581560	446315	53,054804	18,115283

732	581539	446263	53,054733	18,115006
733	581501	446222	53,054608	18,114787
734	581461	446184	53,054477	18,114583
735	581428	446165	53,054371	18,114486
736	581361	446142	53,054152	18,114368
737	581378	445863	53,054198	18,112866
738	581389	445820	53,054232	18,112631
739	581397	445614	53,054250	18,111526
740	581390	445489	53,054223	18,110854
741	581380	445410	53,054187	18,110426
742	581379	445271	53,054179	18,105682
743	581396	445228	53,054234	18,105447
744	581403	445060	53,054250	18,104545
745	581420	444922	53,054299	18,103800
746	581428	444831	53,054321	18,103311
747	581446	444784	53,054378	18,103059
748	581450	444707	53,054388	18,102642
749	581474	444622	53,054462	18,102186
750	581493	444535	53,054523	18,101717
751	581538	444453	53,054663	18,101272
752	581544	444388	53,054681	18,100923
753	581576	444281	53,054779	18,100343
754	581601	444198	53,054858	18,095899
755	581675	444011	53,055091	18,094887
756	581700	443916	53,055167	18,094375
757	581783	443726	53,055429	18,093350
758	581844	443594	53,055621	18,092636
759	581944	443403	53,055938	18,091601
760	581972	443394	53,060028	18,091548
761	582012	443304	53,060155	18,091065
762	582097	443198	53,060427	18,090486
763	582241	443054	53,060887	18,085703
764	582309	442994	53,061105	18,085379
765	582346	442942	53,061221	18,085096
766	582443	442876	53,061534	18,084734
767	585846	453627	53,080924	18,182380
768	585768	453713	53,080675	18,182849
769	585757	453725	53,080638	18,182915
770	585736	453763	53,080573	18,183117
771	585669	453863	53,080358	18,183662
772	585476	454247	53,075744	18,185735
773	585411	454365	53,075539	18,190374
774	585326	454490	53,075267	18,191053
775	585255	454581	53,075041	18,191544
776	585233	454605	53,074970	18,191677
777	585163	454674	53,074746	18,192053

778	585115	454721	53,074593	18,192305
779	585058	454774	53,074409	18,192592
780	585045	454789	53,074366	18,192675
781	585030	454806	53,074319	18,192767
782	585023	454821	53,074297	18,192848
783	585018	454842	53,074283	18,192960
784	585014	454894	53,074269	18,193241
785	585012	454922	53,074263	18,193393
786	585005	454995	53,074244	18,193786
787	584999	455065	53,074227	18,194164
788	585011	455055	53,074265	18,194108
789	585027	455046	53,074316	18,194062
790	585047	455040	53,074380	18,194025
791	585075	455038	53,074471	18,194012
792	585148	455033	53,074709	18,193984
793	585242	455029	53,075013	18,193958
794	585349	455024	53,075359	18,193924
795	585403	455026	53,075534	18,193930
796	585532	455029	53,075951	18,193942
797	585614	455031	53,080216	18,193948
798	585767	455036	53,080711	18,193969
799	585859	455040	53,081009	18,193983
800	585926	455034	53,081225	18,193950
801	586086	455045	53,081745	18,194000
802	586175	455055	53,082032	18,194052
803	586217	455060	53,082168	18,194077
804	586294	455065	53,082418	18,194095
805	586412	455071	53,082799	18,194125
806	586518	455074	53,083142	18,194135
807	586633	455081	53,083516	18,194168
808	586749	455083	53,083891	18,194171
809	586844	455080	53,084200	18,194152
810	586944	455077	53,084523	18,194131
811	587027	455071	53,084791	18,194093
812	587151	455062	53,085192	18,194041
813	587225	455052	53,085433	18,193982
814	587318	455034	53,085732	18,193882
815	587408	455021	53,090023	18,193802
816	587413	455020	53,090038	18,193799
817	587369	455127	53,085899	18,194376
818	587308	455265	53,085707	18,195123
819	587272	455353	53,085592	18,195600
820	587226	455457	53,085447	18,200163
821	587187	455552	53,085323	18,200675
822	587147	455642	53,085197	18,201159
823	587099	455756	53,085044	18,201778

824	587085	455794	53,085001	18,201984
825	587080	455855	53,084986	18,202313
826	587087	455988	53,085013	18,203027
827	587095	456405	53,085052	18,205269
828	580990	455732	53,053271	18,201951
829	581002	455686	53,053309	18,201706
830	581010	455657	53,053334	18,201545
831	581019	455625	53,053361	18,201376
832	581019	455624	53,053362	18,201368
833	581029	455588	53,053392	18,201176
834	581029	455588	53,053393	18,201175
835	581055	455571	53,053474	18,201084
836	581054	455566	53,053473	18,201056
837	581052	455519	53,053466	18,200803
838	581033	455509	53,053401	18,200752
839	581057	455459	53,053480	18,200479
840	581063	455447	53,053498	18,200416
841	581097	455467	53,053610	18,200524
842	581109	455448	53,053647	18,200418
843	581132	455410	53,053719	18,200214
844	581144	455390	53,053758	18,200103
845	581166	455353	53,053828	18,195906
846	581140	455335	53,053742	18,195810
847	581137	455333	53,053735	18,195802
848	581169	455291	53,053838	18,195570
849	581205	455244	53,053951	18,195319
850	581216	455230	53,053986	18,195240
851	581235	455243	53,054047	18,195313
852	581256	455216	53,054116	18,195163
853	581296	455164	53,054243	18,194884
854	581325	455192	53,054339	18,195030
855	581344	455209	53,054401	18,195124
856	581345	455210	53,054404	18,195127
857	581347	455211	53,054409	18,195135
858	581385	455256	53,054535	18,195372
859	581429	455285	53,054678	18,195529
860	581439	455272	53,054710	18,195458
861	581448	455261	53,054739	18,195397
862	581469	455281	53,054808	18,195500
863	581484	455296	53,054857	18,195583
864	581497	455309	53,054899	18,195650
865	581516	455328	53,054959	18,195752
866	581541	455353	53,055043	18,195886
867	581550	455365	53,055072	18,195949
868	581562	455377	53,055110	18,200016
869	581557	455384	53,055095	18,200051

870	581529	455421	53,055006	18,200255
871	581513	455453	53,054956	18,200424
872	581498	455482	53,054908	18,200581
873	581487	455528	53,054872	18,200830
874	581479	455557	53,054849	18,200986
875	581488	455563	53,054878	18,201018
876	581488	455564	53,054877	18,201026
877	581474	455608	53,054831	18,201258
878	581465	455634	53,054804	18,201400
879	581461	455645	53,054794	18,201459
880	581459	455665	53,054787	18,201571
881	581458	455675	53,054784	18,201621
882	581450	455713	53,054757	18,201828
883	581439	455746	53,054725	18,202006
884	581456	455757	53,054779	18,202063
885	581437	455804	53,054718	18,202319
886	581467	455822	53,054817	18,202410
887	581456	455842	53,054783	18,202522
888	581444	455866	53,054745	18,202650
889	581444	455867	53,054743	18,202654
890	581480	455891	53,054860	18,202782
891	581530	455925	53,055023	18,202962
892	581503	456118	53,054942	18,204004
893	581502	456124	53,054938	18,204035
894	581448	456286	53,054768	18,204908
895	581446	456290	53,054764	18,204928
896	581410	456413	53,054649	18,205591
897	581409	456415	53,054647	18,205601
898	581407	456419	53,054642	18,205624
899	581394	456454	53,054600	18,205814
900	581442	456473	53,054756	18,205916
901	581564	456523	53,055152	18,210175
902	581642	456554	53,055404	18,210341
903	581645	456555	53,055414	18,210346
904	581633	456570	53,055376	18,210425
905	581627	456574	53,055356	18,210451
906	581605	456592	53,055287	18,210547
907	581591	456600	53,055240	18,210591
908	581577	456604	53,055196	18,210611
909	581572	456641	53,055180	18,210810
910	581561	456654	53,055145	18,210881
911	581561	456665	53,055144	18,210939
912	581562	456687	53,055150	18,211058
913	581565	456709	53,055159	18,211179
914	581565	456724	53,055159	18,211260
915	581571	456736	53,055180	18,211323

916	581579	456745	53,055205	18,211370
917	581591	456755	53,055246	18,211425
918	581605	456797	53,055294	18,211651
919	581613	456807	53,055319	18,211702
920	581616	456814	53,055328	18,211738
921	581607	456828	53,055300	18,211814
922	581611	456835	53,055312	18,211853
923	581617	456842	53,055332	18,211892
924	581627	456851	53,055364	18,211936
925	581638	456850	53,055400	18,211931
926	581659	456843	53,055468	18,211896
927	581675	456852	53,055520	18,211944
928	581681	456875	53,055541	18,212067
929	581689	456920	53,055567	18,212304
930	581695	456941	53,055587	18,212418
931	580811	456099	53,052703	18,203936
932	580772	456073	53,052574	18,203794
933	580771	456072	53,052570	18,203789
934	580752	456060	53,052509	18,203730
935	580713	456037	53,052382	18,203607
936	580689	456023	53,052305	18,203532
937	580655	456108	53,052198	18,203988
938	580631	456159	53,052121	18,204265
939	580574	456131	53,051935	18,204117
940	576117	465641	53,025759	18,291420
941	576106	465671	53,025723	18,291582
942	576083	465753	53,025652	18,292024
943	576082	465757	53,025649	18,292045
944	576075	465784	53,025625	18,292193
945	576074	465783	53,025622	18,292187
946	576074	465783	53,025622	18,292187
947	576074	465783	53,025622	18,292185
948	576039	465740	53,025510	18,291954
949	576026	465723	53,025467	18,291865
950	576024	465710	53,025459	18,291798
951	576017	465678	53,025438	18,291624
952	575926	465725	53,025141	18,291879
953	575899	465743	53,025055	18,291979
954	575903	465747	53,025069	18,291998
955	575929	465771	53,025152	18,292129
956	575941	465784	53,025193	18,292194
957	575949	465792	53,025220	18,292237
958	575970	465811	53,025286	18,292341
959	576047	465887	53,025539	18,292743
960	576053	465892	53,025558	18,292773
961	576033	465935	53,025495	18,293006

962	576027	465949	53,025474	18,293081
963	575975	465991	53,025309	18,293309
964	575923	466024	53,025140	18,293487
965	575869	466052	53,024966	18,293641
966	575811	466076	53,024779	18,293771
967	575802	466080	53,024750	18,293790
968	575794	466083	53,024723	18,293809
969	575791	466084	53,024714	18,293815
970	575782	466089	53,024685	18,293840
971	575744	466108	53,024561	18,293945
972	575633	466186	53,024206	18,294368
973	575619	466197	53,024158	18,294426
974	575543	466252	53,023914	18,294723
975	575492	466288	53,023752	18,294920
976	575422	466341	53,023526	18,295206
977	575318	466409	53,023192	18,295578
978	575312	466413	53,023171	18,295597
979	575281	466430	53,023070	18,295689
980	575162	466468	53,022686	18,295900
981	575147	466472	53,022639	18,295922
982	575127	466478	53,022574	18,295953
983	575115	466492	53,022535	18,300033
984	575107	466491	53,022510	18,300025
985	575088	466476	53,022447	18,295947
986	575086	466475	53,022440	18,295939
987	575084	466474	53,022435	18,295932
988	575023	466530	53,022239	18,300239
989	574956	466593	53,022023	18,300578
990	574874	466669	53,021758	18,300991
991	574871	466674	53,021750	18,301015
992	574861	466652	53,021716	18,300899
993	574835	466629	53,021631	18,300779
994	574370	466831	53,020131	18,301877
995	574419	466886	53,020290	18,302170
996	574429	466897	53,020324	18,302233
997	574444	466913	53,020371	18,302317
998	574579	467065	53,020813	18,303127
999	574623	467112	53,020957	18,303377
1000	574626	467114	53,020964	18,303392
1001	574671	467166	53,021112	18,303666
1002	574681	467177	53,021145	18,303727
1003	574705	467198	53,021224	18,303836
1004	574717	467206	53,021261	18,303880
1005	574809	467254	53,021560	18,304136
1006	574916	467311	53,021908	18,304435
1007	575051	467391	53,022348	18,304860

1008	575174	467463	53,022747	18,305244
1009	575177	467465	53,022758	18,305253
1010	575184	467468	53,022779	18,305269
1011	575186	467469	53,022786	18,305275
1012	575201	467486	53,022837	18,305366
1013	575278	467585	53,023086	18,305892
1014	575343	467668	53,023298	18,310339
1015	575353	467686	53,023332	18,310434
1016	575393	467722	53,023463	18,310628
1017	575402	467737	53,023493	18,310707
1018	575435	467796	53,023599	18,311024
1019	575436	467798	53,023603	18,311033
1020	575499	467912	53,023811	18,311641
1021	575515	467939	53,023860	18,311786
1022	575546	467999	53,023963	18,312107
1023	575583	468071	53,024086	18,312495
1024	575584	468073	53,024089	18,312504
1025	575596	468095	53,024128	18,312622
1026	575668	468231	53,024364	18,313350
1027	575679	468250	53,024398	18,313453
1028	575692	468275	53,024443	18,313588
1029	575731	468347	53,024569	18,313972
1030	575764	468409	53,024679	18,314302
1031	575765	468410	53,024682	18,314311
1032	575802	468477	53,024801	18,314665
1033	575852	468567	53,024967	18,315150
1034	575906	468627	53,025143	18,315472
1035	575926	468649	53,025208	18,315589
1036	575991	468719	53,025418	18,315958
1037	575996	468723	53,025435	18,315982
1038	575999	468725	53,025444	18,315994
1039	576001	468727	53,025452	18,320005
1040	576066	468794	53,025665	18,320362
1041	576113	468838	53,025817	18,320598
1042	576116	468841	53,025826	18,320610
1043	576117	468841	53,025829	18,320614
1044	576120	468845	53,025841	18,320632
1045	576122	468847	53,025848	18,320643
1046	576183	468904	53,030045	18,320947
1047	576218	468927	53,030160	18,321069
1048	576291	468957	53,030394	18,321228
1049	576299	468964	53,030421	18,321263
1050	576301	468965	53,030426	18,321270
1051	576344	468999	53,030566	18,321452
1052	576398	469033	53,030742	18,321632
1053	576449	469078	53,030909	18,321872

1054	576454	469082	53,030925	18,321894
1055	576456	469084	53,030931	18,321903
1056	576461	469089	53,030949	18,321930
1057	576464	469091	53,030957	18,321941
1058	576471	469097	53,030982	18,321976
1059	576516	469141	53,031127	18,322209
1060	576542	469171	53,031212	18,322369
1061	576556	469189	53,031259	18,322465
1062	576567	469202	53,031295	18,322538
1063	576637	469315	53,031523	18,323139
1064	576653	469327	53,031575	18,323203
1065	576684	469352	53,031677	18,323336
1066	576705	469369	53,031744	18,323427
1067	576732	469389	53,031830	18,323533
1068	576748	469401	53,031883	18,323597
1069	576754	469406	53,031904	18,323627
1070	576774	469424	53,031968	18,323719
1071	576797	469442	53,032043	18,323817
1072	576802	469444	53,032059	18,323827
1073	576856	469486	53,032236	18,324053
1074	576858	469488	53,032240	18,324061
1075	576859	469489	53,032245	18,324070
1076	576863	469492	53,032259	18,324084
1077	576898	469519	53,032370	18,324225
1078	576903	469523	53,032387	18,324249
1079	576906	469525	53,032398	18,324261
1080	576925	469540	53,032459	18,324338
1081	576941	469552	53,032512	18,324404
1082	576949	469558	53,032537	18,324434
1083	576954	469571	53,032555	18,324505
1084	576957	469593	53,032565	18,324621
1085	576948	469747	53,032537	18,325449
1086	576948	469759	53,032539	18,325515
1087	576949	469767	53,032543	18,325555
1088	576951	469774	53,032548	18,325594
1089	576969	469856	53,032609	18,330036
1090	576978	469840	53,032638	18,325949
1091	576989	469821	53,032673	18,325846
1092	576991	469820	53,032679	18,325840
1093	586496	456489	53,083116	18,205751
1094	586632	456434	53,083552	18,205453
1095	586705	456406	53,083788	18,205294
1096	586777	456405	53,084023	18,205289
1097	586818	456405	53,084154	18,205287
1098	587095	456405	53,085052	18,205269
1099	577113	478625	53,033228	18,405145

1100	577148	478534	53,033339	18,404656
1101	577179	478452	53,033438	18,404218
1102	577186	478434	53,033461	18,404119
1103	577197	478404	53,033497	18,403959
1104	577180	478396	53,033442	18,403913
1105	577119	478365	53,033242	18,403748
1106	577049	478329	53,033016	18,403561
1107	577046	478328	53,033006	18,403552
1108	577033	478321	53,032963	18,403517
1109	577003	478306	53,032865	18,403436
1110	576971	478290	53,032763	18,403352
1111	576948	478278	53,032687	18,403288
1112	576932	478271	53,032637	18,403247
1113	576931	478270	53,032633	18,403243
1114	576883	478245	53,032475	18,403112
1115	576865	478236	53,032417	18,403063
1116	576800	478203	53,032207	18,402889
1117	576826	478159	53,032290	18,402649
1118	576844	478139	53,032351	18,402542
1119	576865	478125	53,032416	18,402468
1120	576882	478118	53,032471	18,402429
1121	576939	478111	53,032655	18,402390
1122	576944	478102	53,032674	18,402342
1123	577054	478171	53,033031	18,402711
1124	577075	478140	53,033098	18,402542
1125	577081	478131	53,033118	18,402492
1126	577089	478120	53,033140	18,402435
1127	577090	478118	53,033146	18,402422
1128	577159	478118	53,033367	18,402421
1129	577200	478133	53,033501	18,402499
1130	577238	478160	53,033625	18,402645
1131	577278	478174	53,033753	18,402722
1132	577297	478158	53,033817	18,402631
1133	577305	478126	53,033841	18,402461
1134	577308	478113	53,033850	18,402391
1135	577391	478110	53,034118	18,402370
1136	577407	478032	53,034169	18,401953
1137	577408	478032	53,034174	18,401954
1138	577429	477925	53,034239	18,401379
1139	577460	477881	53,034340	18,401139
1140	577475	477864	53,034387	18,401050
1141	577489	477848	53,034432	18,400964
1142	577499	477840	53,034465	18,400921
1143	577498	477838	53,034463	18,400908
1144	577496	477824	53,034455	18,400834
1145	577452	477786	53,034311	18,400629

1146	577445	477706	53,034288	18,400199
1147	577426	477617	53,034226	18,395722
1148	577440	477575	53,034269	18,395497
1149	577446	477544	53,034288	18,395330
1150	577454	477510	53,034314	18,395150
1151	577467	477484	53,034357	18,395007
1152	577484	477466	53,034412	18,394911
1153	577501	477458	53,034465	18,394866
1154	577504	477454	53,034477	18,394845
1155	577506	477456	53,034481	18,394855
1156	577501	477463	53,034466	18,394894
1157	577499	477476	53,034458	18,394962
1158	577501	477488	53,034466	18,395029
1159	577500	477504	53,034463	18,395112
1160	577507	477530	53,034487	18,395251
1161	577523	477550	53,034538	18,395359
1162	577529	477554	53,034557	18,395382
1163	577540	477564	53,034595	18,395435
1164	577544	477573	53,034606	18,395485
1165	577543	477587	53,034604	18,395557
1166	577546	477586	53,034612	18,395556
1167	577615	477503	53,034836	18,395104
1168	577624	477498	53,034864	18,395078
1169	577627	477483	53,034874	18,394997
1170	577665	477471	53,034996	18,394933
1171	577697	477463	53,035102	18,394888
1172	577702	477459	53,035117	18,394865
1173	577710	477444	53,035141	18,394785
1174	577720	477424	53,035174	18,394677
1175	577732	477419	53,035214	18,394652
1176	577732	477417	53,035213	18,394641
1177	577690	477361	53,035076	18,394338
1178	577658	477321	53,034972	18,394127
1179	577634	477291	53,034893	18,393966
1180	577637	477288	53,034903	18,393952
1181	577638	477285	53,034906	18,393935
1182	577664	477258	53,034991	18,393786
1183	577669	477255	53,035007	18,393772
1184	577686	477246	53,035061	18,393723
1185	577687	477245	53,035064	18,393719
1186	577708	477241	53,035133	18,393694
1187	577719	477234	53,035168	18,393656
1188	577726	477226	53,035189	18,393612
1189	577762	477208	53,035306	18,393517
1190	577785	477198	53,035383	18,393461
1191	577785	477196	53,035380	18,393452

1192	577781	477186	53,035367	18,393400
1193	577795	477149	53,035412	18,393198
1194	577833	477134	53,035537	18,393119
1195	577833	477134	53,035536	18,393115
1196	577827	477115	53,035516	18,393016
1197	577723	477101	53,035178	18,392942
1198	577772	476946	53,035334	18,392109
1199	577785	476903	53,035377	18,391879
1200	577817	476803	53,035478	18,391340
1201	577840	476729	53,035553	18,390942
1202	577855	476682	53,035600	18,390690
1203	577865	476678	53,035631	18,390664
1204	577893	476663	53,035724	18,390582
1205	577894	476661	53,035727	18,390573
1206	577917	476622	53,035800	18,390362
1207	577931	476598	53,035843	18,390235
1208	577951	476563	53,035908	18,390047
1209	577971	476528	53,035973	18,385858
1210	577991	476493	53,040038	18,385670
1211	578059	476372	53,040254	18,385017
1212	578084	476327	53,040334	18,384776
1213	578097	476307	53,040377	18,384666
1214	578182	476151	53,040648	18,383824
1215	578186	476145	53,040663	18,383791
1216	578188	476142	53,040669	18,383778
1217	578199	476128	53,040704	18,383701
1218	578192	476116	53,040682	18,383637
1219	578184	476096	53,040656	18,383528
1220	578178	476041	53,040634	18,383232
1221	578177	476038	53,040633	18,383219
1222	578160	475844	53,040573	18,382176
1223	578170	475783	53,040606	18,381850
1224	578166	475752	53,040591	18,381684
1225	578216	475595	53,040752	18,380836
1226	578307	475461	53,041042	18,380111
1227	578315	475449	53,041070	18,380050
1228	578317	475448	53,041074	18,380041
1229	578453	475267	53,041511	18,375065
1230	578456	475258	53,041523	18,375021
1231	578457	475257	53,041525	18,375016
1232	578460	475251	53,041535	18,374980
1233	578440	475144	53,041469	18,374405
1234	578436	475101	53,041456	18,374174
1235	578437	475093	53,041456	18,374131
1236	578439	475008	53,041464	18,373677
1237	578439	475006	53,041464	18,373665

1238	578443	474974	53,041476	18,373493
1239	578453	474896	53,041505	18,373074
1240	578473	474854	53,041571	18,372845
1241	578477	474846	53,041583	18,372804
1242	578496	474807	53,041645	18,372592
1243	578503	474793	53,041666	18,372519
1244	578519	474760	53,041718	18,372339
1245	578552	474665	53,041824	18,371827
1246	578562	474632	53,041856	18,371653
1247	578594	474529	53,041957	18,371097
1248	578597	474507	53,041965	18,370979
1249	578606	474469	53,041993	18,370774
1250	578578	474467	53,041902	18,370763
1251	578585	474423	53,041924	18,370526
1252	578627	474390	53,042061	18,370350
1253	578636	474391	53,042089	18,370354
1254	578662	474394	53,042175	18,370367
1255	578669	474394	53,042196	18,370371
1256	578680	474353	53,042231	18,370150
1257	578694	474301	53,042277	18,365868
1258	578704	474264	53,042309	18,365670
1259	578738	474125	53,042417	18,364921
1260	578746	474102	53,042442	18,364796
1261	578771	474029	53,042520	18,364404
1262	578772	473991	53,042524	18,364199
1263	578793	473920	53,042590	18,363815
1264	578808	473858	53,042638	18,363483
1265	578833	473699	53,042717	18,362631
1266	578834	473694	53,042719	18,362604
1267	578835	473692	53,042720	18,362590
1268	578850	473580	53,042769	18,361991
1269	578851	473579	53,042770	18,361985
1270	578853	473572	53,042777	18,361947
1271	578869	473518	53,042830	18,361656
1272	578890	473423	53,042896	18,361143
1273	578904	473431	53,042939	18,361188
1274	578936	473452	53,043043	18,361298
1275	578976	473468	53,043175	18,361382
1276	578986	473444	53,043205	18,361251
1277	578969	473417	53,043152	18,361107
1278	578985	473379	53,043202	18,360903
1279	579017	473376	53,043307	18,360886
1280	579101	473329	53,043577	18,360634
1281	579128	473306	53,043663	18,360508
1282	579150	473277	53,043735	18,360351
1283	579156	473260	53,043752	18,360258

1284	579149	473254	53,043729	18,360229
1285	579131	473250	53,043672	18,360207
1286	579069	473292	53,043471	18,360436
1287	579063	473290	53,043454	18,360424
1288	579112	473149	53,043609	18,355665
1289	579153	473026	53,043740	18,355003
1290	579177	473031	53,043817	18,355026
1291	579181	473031	53,043829	18,355029
1292	579186	473005	53,043846	18,354890
1293	579200	472959	53,043890	18,354638
1294	579203	472950	53,043899	18,354590
1295	579206	472938	53,043910	18,354525
1296	579219	472901	53,043950	18,354328
1297	579220	472898	53,043954	18,354309
1298	579260	472840	53,044081	18,353998
1299	579271	472815	53,044116	18,353865
1300	579277	472806	53,044135	18,353815
1301	579283	472794	53,044156	18,353752
1302	579288	472773	53,044170	18,353639
1303	579293	472765	53,044187	18,353592
1304	579297	472762	53,044200	18,353579
1305	579317	472755	53,044265	18,353539
1306	579345	472713	53,044357	18,353312
1307	579374	472688	53,044449	18,353177
1308	579419	472559	53,044591	18,352483
1309	579427	472493	53,044617	18,352130
1310	579435	472430	53,044642	18,351787
1311	579437	472357	53,044647	18,351397
1312	579439	472309	53,044651	18,351136
1313	579458	472240	53,044712	18,350767
1314	579459	472237	53,044714	18,350752
1315	579466	472210	53,044739	18,350603
1316	579492	472117	53,044821	18,350103
1317	579505	472050	53,044859	18,345744
1318	579519	471950	53,044903	18,345208
1319	579527	471938	53,044930	18,345143
1320	579543	471816	53,044980	18,344487
1321	579544	471811	53,044982	18,344461
1322	579545	471808	53,044986	18,344442
1323	579562	471762	53,045040	18,344194
1324	579582	471706	53,045105	18,343893
1325	579590	471684	53,045130	18,343773
1326	579573	471643	53,045073	18,343556
1327	579551	471596	53,045002	18,343300
1328	579526	471538	53,044919	18,342992
1329	579531	471517	53,044936	18,342880

1330	579556	471422	53,045015	18,342364
1331	579578	471338	53,045085	18,341913
1332	579579	471336	53,045086	18,341902
1333	579583	471322	53,045098	18,341826
1334	579589	471297	53,045119	18,341694
1335	579590	471295	53,045121	18,341682
1336	579600	471255	53,045153	18,341469
1337	579607	471227	53,045176	18,341319
1338	579614	471203	53,045196	18,341185
1339	579619	471183	53,045212	18,341079
1340	579612	471118	53,045190	18,340732
1341	579619	471027	53,045211	18,340238
1342	579620	471016	53,045213	18,340182
1343	579623	471005	53,045223	18,340122
1344	579621	470999	53,045217	18,340089
1345	579622	470997	53,045218	18,340081
1346	579622	470991	53,045220	18,340046
1347	579638	470987	53,045271	18,340025
1348	579644	470981	53,045290	18,335995
1349	579655	470976	53,045325	18,335968
1350	579668	470981	53,045367	18,335991
1351	579689	470956	53,045436	18,335856
1352	579700	470951	53,045472	18,335829
1353	579720	470945	53,045537	18,335796
1354	579729	470936	53,045565	18,335751
1355	579694	470882	53,045451	18,335461
1356	579691	470861	53,045441	18,335348
1357	579690	470856	53,045438	18,335321
1358	579695	470828	53,045453	18,335171
1359	579697	470819	53,045458	18,335118
1360	579697	470817	53,045459	18,335107
1361	579697	470815	53,045459	18,335097
1362	579717	470810	53,045523	18,335073
1363	579768	470619	53,045684	18,334043
1364	579794	470522	53,045766	18,333518
1365	579795	470519	53,045769	18,333504
1366	579812	470453	53,045824	18,333151
1367	579822	470415	53,045856	18,332944
1368	579837	470362	53,045901	18,332657
1369	579839	470352	53,045909	18,332604
1370	579865	470255	53,045991	18,332082
1371	579867	470248	53,045997	18,332046
1372	579918	470055	53,050159	18,331006
1373	579923	470036	53,050176	18,330902
1374	579901	470026	53,050102	18,330853
1375	579867	470013	53,045993	18,330780

1376	579845	470004	53,045922	18,330733
1377	579835	470004	53,045888	18,330733
1378	579816	469998	53,045827	18,330700
1379	579839	469799	53,045899	18,325633
1380	579846	469746	53,045919	18,325345
1381	579857	469653	53,045953	18,324846
1382	579863	469601	53,045972	18,324564
1383	579872	469571	53,045999	18,324408
1384	579893	469500	53,050066	18,324022
1385	579918	469416	53,050144	18,323572
1386	579930	469375	53,050183	18,323349
1387	579941	469337	53,050218	18,323144
1388	579942	469333	53,050222	18,323124
1389	579945	469322	53,050232	18,323064
1390	579948	469312	53,050241	18,323011
1391	579936	469260	53,050202	18,322729
1392	579922	469252	53,050156	18,322688
1393	579914	469251	53,050130	18,322682
1394	579879	469245	53,050016	18,322652
1395	579882	469084	53,050024	18,321785
1396	579895	469059	53,050063	18,321650
1397	579886	469030	53,050032	18,321498
1398	579881	469017	53,050018	18,321426
1399	579869	468981	53,045979	18,321235
1400	579885	468922	53,050027	18,320915
1401	579896	468901	53,050063	18,320801
1402	579915	468835	53,050124	18,320447
1403	579923	468807	53,050150	18,320295
1404	579946	468768	53,050222	18,320088
1405	579963	468734	53,050277	18,315904
1406	579994	468681	53,050375	18,315615
1407	580032	468598	53,050498	18,315167
1408	580034	468593	53,050505	18,315140
1409	580063	468539	53,050595	18,314851
1410	580090	468474	53,050684	18,314497
1411	580096	468468	53,050702	18,314467
1412	580138	468427	53,050837	18,314244
1413	580140	468423	53,050843	18,314224
1414	580154	468395	53,050890	18,314074
1415	580166	468373	53,050926	18,313956
1416	580176	468356	53,050957	18,313860
1417	580196	468336	53,051021	18,313756
1418	580199	468329	53,051033	18,313718
1419	580200	468322	53,051037	18,313677
1420	580198	468298	53,051029	18,313548
1421	580203	468288	53,051045	18,313495

1422	580206	468286	53,051053	18,313486
1423	580252	468251	53,051204	18,313293
1424	580263	468234	53,051239	18,313203
1425	580277	468206	53,051283	18,313052
1426	580295	468190	53,051339	18,312965
1427	580313	468164	53,051399	18,312825
1428	580328	468146	53,051446	18,312729
1429	580331	468143	53,051455	18,312710
1430	580332	468141	53,051460	18,312701
1431	580343	468137	53,051495	18,312679
1432	580400	468115	53,051678	18,312561
1433	580436	468081	53,051793	18,312374
1434	580495	468024	53,051983	18,312068
1435	580556	467965	53,052179	18,311749
1436	580559	467965	53,052188	18,311747
1437	580565	467964	53,052211	18,311740
1438	580643	467974	53,052462	18,311790
1439	580700	467981	53,052647	18,311827
1440	580777	467917	53,052893	18,311482
1441	580810	467886	53,053002	18,311311
1442	580839	467806	53,053094	18,310881
1443	580875	467789	53,053208	18,310791
1444	580897	467776	53,053280	18,310719
1445	580956	467741	53,053470	18,310529
1446	580906	467679	53,053306	18,310196
1447	580902	467664	53,053294	18,310116
1448	580882	467582	53,053227	18,305677
1449	580878	467560	53,053215	18,305556
1450	580884	467468	53,053230	18,305064
1451	580891	467405	53,053253	18,304724
1452	580895	467401	53,053267	18,304701
1453	580932	467366	53,053384	18,304510
1454	580965	467316	53,053490	18,304242
1455	580966	467314	53,053494	18,304233
1456	580981	467293	53,053540	18,304116
1457	581006	467266	53,053622	18,303970
1458	581083	467229	53,053869	18,303767
1459	581104	467218	53,053937	18,303712
1460	581135	467021	53,054034	18,302652
1461	581231	467024	53,054345	18,302661
1462	581240	467016	53,054373	18,302619
1463	581277	466909	53,054492	18,302040
1464	581296	466869	53,054552	18,301825
1465	581324	466791	53,054640	18,301408
1466	581345	466733	53,054706	18,301096
1467	581343	466617	53,054697	18,300468

1468	581347	466597	53,054711	18,300363
1469	581348	466595	53,054713	18,300348
1470	581358	466550	53,054746	18,300107
1471	581373	466512	53,054791	18,295904
1472	581378	466498	53,054808	18,295829
1473	581383	466463	53,054825	18,295640
1474	581422	466422	53,054948	18,295418
1475	581441	466401	53,055010	18,295306
1476	581463	466300	53,055080	18,294757
1477	581465	466291	53,055086	18,294712
1478	581497	466146	53,055186	18,293929
1479	581531	465989	53,055291	18,293084
1480	581662	466036	53,055717	18,293330
1481	581755	466071	53,060018	18,293520
1482	581728	466154	53,055934	18,293964
1483	581711	466212	53,055879	18,294279
1484	581780	466184	53,060101	18,294124
1485	581802	466175	53,060175	18,294072
1486	581856	466165	53,060350	18,294021
1487	581910	466156	53,060522	18,293970
1488	581921	466179	53,060559	18,294091
1489	581952	466146	53,060657	18,293913
1490	581993	466157	53,060792	18,293972
1491	582011	466147	53,060849	18,293917
1492	582040	466161	53,060945	18,293992
1493	582048	466192	53,060971	18,294157
1494	582053	466200	53,060986	18,294201
1495	582065	466220	53,061024	18,294308
1496	582089	466273	53,061104	18,294590
1497	582127	466281	53,061227	18,294632
1498	582144	466291	53,061283	18,294686
1499	582159	466291	53,061331	18,294686
1500	582181	466322	53,061405	18,294851
1501	582220	466299	53,061531	18,294724
1502	582225	466301	53,061547	18,294735
1503	582275	466323	53,061708	18,294855
1504	582285	466326	53,061742	18,294869
1505	582288	466327	53,061752	18,294873
1506	582315	466334	53,061837	18,294909
1507	582379	466360	53,062044	18,295046
1508	582433	466382	53,062221	18,295167
1509	577000	476063	53,032822	18,383384
1510	576990	476080	53,032790	18,383478
1511	576986	476089	53,032776	18,383523
1512	576981	476096	53,032762	18,383564
1513	576947	476158	53,032653	18,383898

1514	576902	476242	53,032507	18,384348
1515	576883	476332	53,032447	18,384832
1516	576875	476371	53,032421	18,385040
1517	576845	476375	53,032327	18,385062
1518	576773	476427	53,032093	18,385347
1519	576710	476473	53,031891	18,385593
1520	576612	476544	53,031573	18,385981
1521	576547	476591	53,031365	18,390235
1522	576536	476599	53,031329	18,390278
1523	576506	476622	53,031231	18,390398
1524	576504	476623	53,031225	18,390406
1525	576468	476649	53,031109	18,390548
1526	576405	476637	53,030906	18,390486
1527	576396	476759	53,030879	18,391141
1528	576396	476766	53,030878	18,391179
1529	576389	476813	53,030855	18,391427
1530	576344	476881	53,030712	18,391797
1531	576291	476969	53,030542	18,392272
1532	576288	476974	53,030533	18,392298
1533	576275	477003	53,030489	18,392453
1534	576250	477055	53,030411	18,392733
1535	576213	477135	53,030291	18,393163
1536	576212	477138	53,030287	18,393178
1537	576130	477136	53,030023	18,393170
1538	576061	477134	53,025798	18,393163
1539	576052	477134	53,025772	18,393162
1540	576052	477135	53,025771	18,393167
1541	576047	477157	53,025753	18,393286
1542	576038	477167	53,025724	18,393342
1543	576037	477169	53,025723	18,393349
1544	576036	477176	53,025718	18,393388
1545	576030	477197	53,025701	18,393500
1546	576030	477198	53,025699	18,393509
1547	576011	477237	53,025639	18,393716
1548	576043	477252	53,025744	18,393796
1549	576052	477256	53,025771	18,393817
1550	576111	477284	53,025965	18,393965
1551	576073	477367	53,025842	18,394414
1552	576000	477333	53,025606	18,394231
1553	575972	477319	53,025513	18,394158
1554	575921	477427	53,025349	18,394740
1555	575906	477463	53,025302	18,394932
1556	575895	477488	53,025268	18,395066
1557	575892	477496	53,025257	18,395112
1558	575869	477549	53,025183	18,395398
1559	585846	453627	53,080924	18,182380

1560	585814	453618	53,080820	18,182334
1561	585784	453608	53,080722	18,182279
1562	585765	453602	53,080661	18,182249
1563	585741	453593	53,080583	18,182202
1564	585689	453597	53,080416	18,182229
1565	585607	453578	53,080149	18,182132
1566	585565	453540	53,080012	18,181926
1567	585539	453531	53,075928	18,181882
1568	585468	453521	53,075698	18,181832
1569	585361	453509	53,075350	18,181772
1570	585334	453502	53,075261	18,181736
1571	585082	453448	53,074447	18,181455
1572	585010	453442	53,074212	18,181426
1573	584983	453447	53,074124	18,181456
1574	584975	453446	53,074099	18,181452
1575	584907	453368	53,073877	18,181034
1576	584875	453320	53,073772	18,180781
1577	584844	453285	53,073670	18,180591
1578	584705	453207	53,073217	18,180178
1579	584644	453080	53,073016	18,175501
1580	584639	453070	53,072999	18,175448
1581	584631	452976	53,072969	18,174941
1582	584627	452952	53,072958	18,174811
1583	584618	452824	53,072923	18,174124
1584	584603	452644	53,072869	18,173157
1585	584578	452474	53,072784	18,172244
1586	584571	452442	53,072761	18,172071
1587	584569	452434	53,072754	18,172026
1588	584555	452382	53,072706	18,171749
1589	584544	452338	53,072670	18,171513
1590	584515	452249	53,072571	18,171036
1591	584469	452142	53,072419	18,170463
1592	584464	452130	53,072401	18,170399
1593	584456	452115	53,072378	18,170315
1594	584331	451875	53,071964	18,165030
1595	584292	451789	53,071836	18,164571
1596	584281	451765	53,071798	18,164444
1597	584244	451690	53,071677	18,164040
1598	584207	451617	53,071554	18,163650
1599	584192	451584	53,071504	18,163474
1600	584156	451502	53,071384	18,163034
1601	584116	451420	53,071255	18,162596
1602	584012	451226	53,070910	18,161558
1603	583967	451140	53,070761	18,161095
1604	583962	451101	53,070745	18,160890
1605	583956	451047	53,070722	18,160600

1606	583931	450837	53,070635	18,155471
1607	583920	450791	53,070599	18,155224
1608	584041	450851	53,070990	18,155536
1609	584085	450876	53,071135	18,155669
1610	584095	450883	53,071169	18,155708
1611	584284	451017	53,071784	18,160421
1612	584427	451121	53,072249	18,160972
1613	584609	451264	53,072843	18,161732
1614	584644	451292	53,072958	18,161881
1615	584855	451305	53,073643	18,161938
1616	584866	451306	53,073678	18,161941
1617	584958	451314	53,073974	18,161977
1618	585268	451362	53,074981	18,162219
1619	585405	451383	53,075425	18,162326
1620	585467	451389	53,075626	18,162358
1621	585500	451393	53,075732	18,162377
1622	585541	451392	53,075865	18,162368
1623	585590	451390	53,080024	18,162355
1624	585598	451390	53,080049	18,162352
1625	585575	451286	53,075970	18,161795
1626	585527	451098	53,075808	18,160788
1627	585480	450814	53,075649	18,155260
1628	585470	450713	53,075611	18,154717
1629	585445	450531	53,075524	18,153741
1630	585423	450436	53,075453	18,153227
1631	585408	450363	53,075400	18,152834
1632	585351	450123	53,075208	18,151549
1633	585299	450003	53,075036	18,150906
1634	585294	449989	53,075018	18,150830
1635	585216	449750	53,074757	18,145546
1636	585209	449729	53,074734	18,145438
1637	585185	449644	53,074654	18,144979
1638	585157	449516	53,074560	18,144292
1639	585136	449456	53,074488	18,143970
1640	585129	449418	53,074466	18,143768
1641	585118	449379	53,074429	18,143557
1642	585118	449337	53,074428	18,143331
1643	585112	449269	53,074406	18,142967
1644	585101	449223	53,074367	18,142719
1645	585047	449139	53,074189	18,142272
1646	585031	449115	53,074136	18,142140
1647	585003	449055	53,074044	18,141822
1648	584981	449014	53,073971	18,141601
1649	584932	448925	53,073811	18,141127
1650	584928	448919	53,073797	18,141091
1651	584900	448877	53,073705	18,140870

1652	584843	448791	53,073516	18,140407
1653	584784	448703	53,073323	18,135940
1654	584754	448640	53,073225	18,135601
1655	584714	448589	53,073095	18,135330
1656	584611	448427	53,072753	18,134464
1657	584540	448307	53,072520	18,133824
1658	584500	448262	53,072390	18,133584
1659	584431	448160	53,072164	18,133039
1660	584373	448098	53,071973	18,132706
1661	584255	447897	53,071583	18,131635
1662	584207	447843	53,071425	18,131345
1663	584160	447759	53,071272	18,130898
1664	584110	447712	53,071107	18,130648
1665	584095	447691	53,071059	18,130535
1666	584019	447503	53,070806	18,125528
1667	583979	447388	53,070671	18,124912
1668	583971	447367	53,070646	18,124800
1669	583939	447274	53,070538	18,124298
1670	583908	447196	53,070437	18,123882
1671	583887	447157	53,070367	18,123671
1672	583885	447150	53,070358	18,123637
1673	583815	447034	53,070127	18,123015
1674	583767	446942	53,065970	18,122522
1675	583734	446895	53,065862	18,122273
1676	583686	446813	53,065703	18,121832
1677	583626	446761	53,065507	18,121559
1678	583523	446627	53,065170	18,120844
1679	583437	446583	53,064888	18,120610
1680	583394	446560	53,064749	18,120492
1681	583361	446525	53,064640	18,120305
1682	583352	446517	53,064610	18,120261
1683	583313	446475	53,064485	18,120036
1684	583247	446405	53,064268	18,115668
1685	583181	446330	53,064052	18,115267
1686	583128	446196	53,063875	18,114549
1687	583128	446195	53,063873	18,114542
1688	583088	446089	53,063740	18,113978
1689	583013	445956	53,063495	18,113266
1690	582983	445902	53,063394	18,112973
1691	582954	445873	53,063299	18,112820
1692	582926	445848	53,063208	18,112691
1693	582913	445837	53,063167	18,112629
1694	582807	445757	53,062820	18,112205
1695	582752	445701	53,062640	18,111910
1696	582676	445616	53,062391	18,111457
1697	582643	445577	53,062283	18,111247

1698	582624	445551	53,062219	18,111108
1699	582590	445428	53,062105	18,110452
1700	582523	445245	53,061883	18,105470
1701	582516	445221	53,061858	18,105343
1702	582465	445087	53,061687	18,104622
1703	582466	445055	53,061689	18,104452
1704	582466	444956	53,061687	18,103918
1705	582485	444871	53,061746	18,103462
1706	582489	444806	53,061755	18,103110
1707	582490	444777	53,061757	18,102957
1708	582506	444587	53,061802	18,101934
1709	582540	444514	53,061910	18,101539
1710	582549	444434	53,061935	18,101108
1711	582578	444381	53,062026	18,100818
1712	582581	444374	53,062036	18,100782
1713	582593	444360	53,062074	18,100706
1714	582661	444272	53,062293	18,100229
1715	582751	444193	53,062581	18,095799
1716	582830	444124	53,062835	18,095423
1717	582915	444038	53,063104	18,094954
1718	582947	444009	53,063208	18,094798
1719	583041	443882	53,063508	18,094105
1720	583079	443793	53,063627	18,093627
1721	583131	443686	53,063790	18,093049
1722	583152	443681	53,063860	18,093016
1723	583153	443605	53,063859	18,092610
1724	583139	443598	53,063815	18,092571
1725	583135	443584	53,063801	18,092498
1726	583134	443582	53,063798	18,092486
1727	583134	443579	53,063796	18,092473
1728	583123	443545	53,063760	18,092290
1729	583123	443536	53,063761	18,092243
1730	583129	443353	53,063773	18,091258
1731	583030	443418	53,063455	18,091612
1732	582948	443433	53,063188	18,091700
1733	582909	443460	53,063064	18,091843
1734	582868	443424	53,062929	18,091657
1735	582691	443127	53,062346	18,090070
1736	582443	442876	53,061534	18,084734
1737	577000	476063	53,032822	18,383384
1738	576997	475940	53,032811	18,382725
1739	576994	475820	53,032799	18,382081
1740	576991	475701	53,032787	18,381437
1741	576988	475581	53,032774	18,380793
1742	576984	475441	53,032760	18,380042
1743	576981	475321	53,032748	18,375399

1744	576979	475258	53,032742	18,375060
1745	576979	475241	53,032740	18,374970
1746	576979	475231	53,032739	18,374913
1747	576978	475220	53,032738	18,374856
1748	576978	475214	53,032737	18,374823
1749	576975	475102	53,032726	18,374219
1750	576971	474942	53,032710	18,373360
1751	576968	474802	53,032696	18,372609
1752	576965	474687	53,032685	18,371994
1753	576964	474662	53,032683	18,371858
1754	576961	474541	53,032671	18,371208
1755	576961	474522	53,032669	18,371106
1756	576958	474437	53,032659	18,370650
1757	576958	474423	53,032658	18,370576
1758	576958	474419	53,032657	18,370553
1759	576958	474410	53,032657	18,370506
1760	576958	474390	53,032657	18,370399
1761	576953	474390	53,032641	18,370399
1762	576952	474375	53,032639	18,370316
1763	576958	474363	53,032656	18,370251
1764	576963	474350	53,032674	18,370183
1765	576978	474317	53,032722	18,370005
1766	576994	474282	53,032773	18,365816
1767	577039	474183	53,032916	18,365282
1768	577076	474102	53,033034	18,364843
1769	577121	474001	53,033179	18,364301
1770	577161	473914	53,033305	18,363831
1771	577173	473885	53,033346	18,363678
1772	577181	473867	53,033372	18,363580
1773	577203	473819	53,033442	18,363320
1774	577217	473790	53,033484	18,363163
1775	577229	473762	53,033524	18,363016
1776	577237	473745	53,033549	18,362924
1777	577262	473689	53,033630	18,362621
1778	577274	473663	53,033668	18,362479
1779	577286	473637	53,033705	18,362338
1780	577318	473564	53,033810	18,361949
1781	577323	473553	53,033826	18,361888
1782	577334	473530	53,033860	18,361764
1783	577337	473524	53,033868	18,361731
1784	577355	473484	53,033926	18,361516
1785	577376	473438	53,033993	18,361267
1786	577398	473389	53,034063	18,361005
1787	577415	473350	53,034119	18,360795
1788	577418	473343	53,034129	18,360759
1789	577435	473305	53,034185	18,360553

1790	577438	473299	53,034194	18,360519
1791	577449	473275	53,034228	18,360390
1792	577459	473252	53,034261	18,360267
1793	577462	473246	53,034270	18,360234
1794	577479	473209	53,034323	18,360038
1795	577523	473112	53,034464	18,355512
1796	577545	473062	53,034536	18,355245
1797	577566	473016	53,034603	18,354996
1798	577589	472967	53,034675	18,354730
1799	577602	472966	53,034719	18,354728
1800	577619	472966	53,034771	18,354724
1801	577619	472958	53,034772	18,354682
1802	577622	472854	53,034780	18,354121
1803	577625	472726	53,034789	18,353437
1804	577627	472656	53,034794	18,353061
1805	577629	472603	53,034797	18,352773
1806	577631	472504	53,034803	18,352244
1807	577633	472420	53,034808	18,351790
1808	577633	472412	53,034809	18,351747
1809	577634	472406	53,034809	18,351715
1810	577576	472413	53,034622	18,351757
1811	577502	472423	53,034383	18,351810
1812	577403	472435	53,034064	18,351881
1813	577377	472326	53,033977	18,351293
1814	577353	472226	53,033898	18,350755
1815	577350	472214	53,033889	18,350693
1816	577330	472131	53,033823	18,350249
1817	577311	472048	53,033758	18,345803
1818	577299	471997	53,033717	18,345529
1819	577284	471937	53,033670	18,345207
1820	577261	471840	53,033593	18,344684
1821	577237	471739	53,033514	18,344145
1822	577232	471718	53,033497	18,344030
1823	577217	471655	53,033447	18,343692
1824	577192	471553	53,033365	18,343146
1825	577168	471451	53,033283	18,342597
1826	577212	471440	53,033426	18,342538
1827	577261	471428	53,033586	18,342471
1828	577265	471427	53,033599	18,342466
1829	577315	471415	53,033759	18,342400
1830	577352	471406	53,033879	18,342350
1831	577364	471403	53,033919	18,342333
1832	577378	471399	53,033963	18,342315
1833	577383	471398	53,033978	18,342309
1834	577407	471392	53,034057	18,342276
1835	577409	471392	53,034063	18,342273

1836	577459	471380	53,034226	18,342206
1837	577484	471374	53,034307	18,342172
1838	577515	471366	53,034407	18,342131
1839	577625	471339	53,034762	18,341983
1840	577718	471317	53,035061	18,341859
1841	577717	471314	53,035060	18,341844
1842	577709	471275	53,035031	18,341638
1843	577695	471213	53,034985	18,341305
1844	577694	471209	53,034982	18,341281
1845	577661	471081	53,034872	18,340593
1846	577636	470984	53,034790	18,340074
1847	577629	470957	53,034767	18,335929
1848	577616	470907	53,034724	18,335659
1849	577586	470791	53,034624	18,335036
1850	577569	470726	53,034569	18,334690
1851	577556	470675	53,034525	18,334414
1852	577524	470549	53,034418	18,333740
1853	577502	470465	53,034347	18,333292
1854	577491	470423	53,034310	18,333065
1855	577465	470323	53,034225	18,332528
1856	577461	470307	53,034211	18,332442
1857	577465	470280	53,034224	18,332296
1858	577470	470255	53,034239	18,332163
1859	577387	470177	53,033969	18,331747
1860	577280	470079	53,033619	18,331221
1861	577269	470069	53,033584	18,331168
1862	577248	470049	53,033515	18,331065
1863	577232	470036	53,033465	18,330992
1864	577196	470004	53,033348	18,330821
1865	577128	469943	53,033126	18,330496
1866	577012	469839	53,032748	18,325941
1867	577000	469828	53,032710	18,325885
1868	576991	469820	53,032679	18,325840
1869	582381	466467	53,062056	18,295625
1870	582339	466523	53,061919	18,295925
1871	582373	466547	53,062032	18,300052
1872	582378	466550	53,062046	18,300069
1873	582387	466557	53,062076	18,300106
1874	582394	466562	53,062099	18,300134
1875	582449	466504	53,062276	18,295819
1876	582477	466490	53,062366	18,295742
1877	582511	466406	53,062473	18,295291
1878	582550	466390	53,062600	18,295204
1879	582580	466408	53,062697	18,295300
1880	582629	466443	53,062856	18,295486
1881	582646	466449	53,062912	18,295516

1882	582797	466495	53,063402	18,295756
1883	582921	466540	53,063805	18,295995
1884	582935	466548	53,063849	18,300036